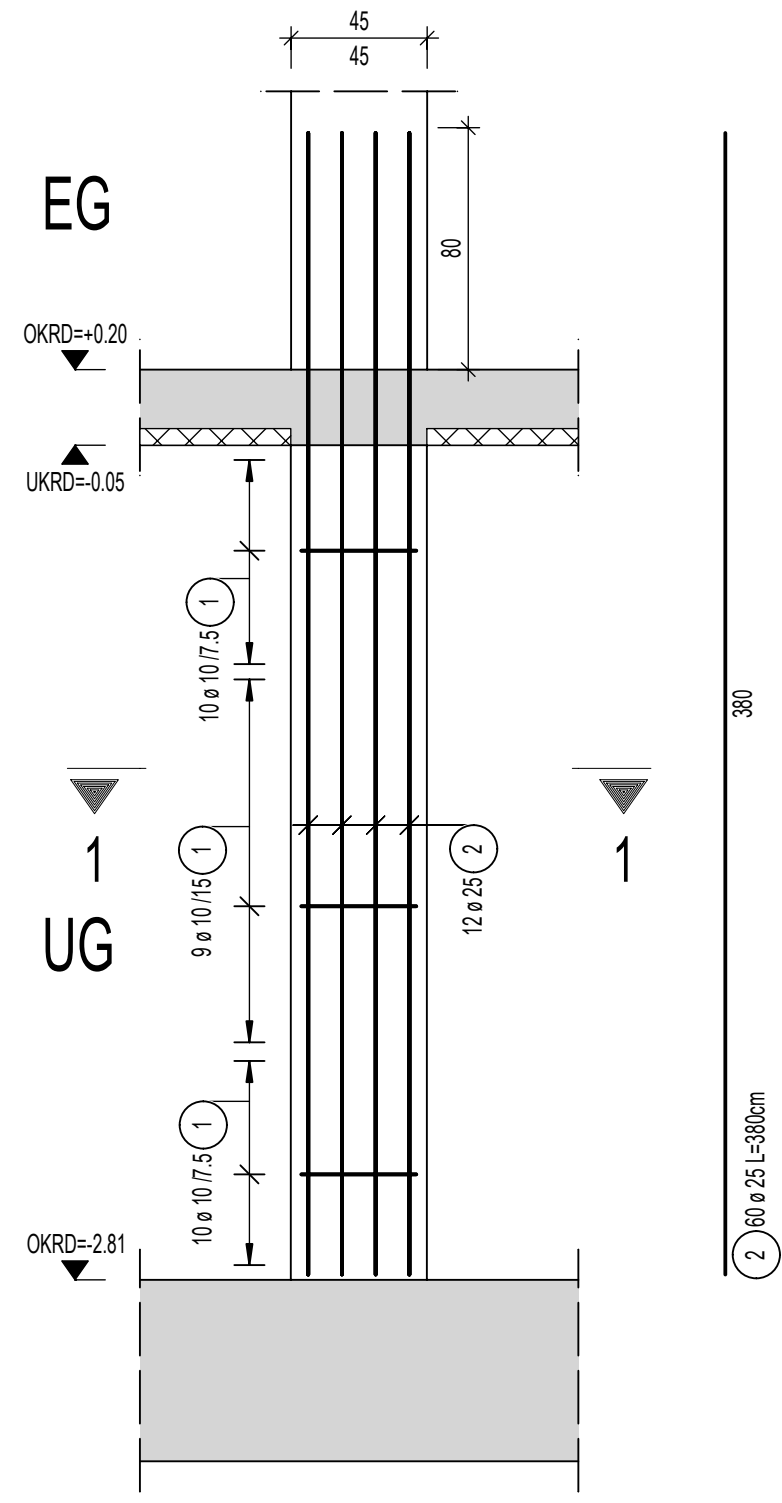


UG-STÜTZEN C35/45, Achse 13 bis 16, Haus 31

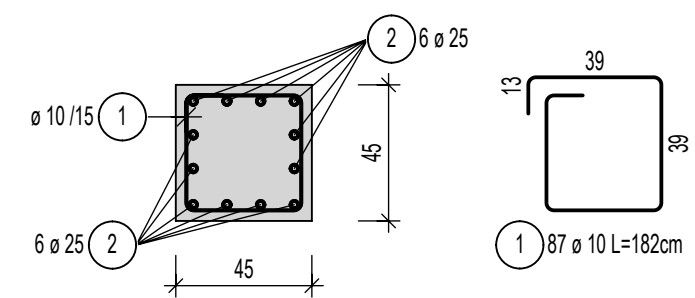
ÜBERSICHT UG-STÜTZEN 1:150

S-18 bis S-19 und S-21

Stb. Stütze, b/d=45/45cm  
C35/45, Betondeckung: Cv=3,0cm  
M 1:25, 3xAusführen

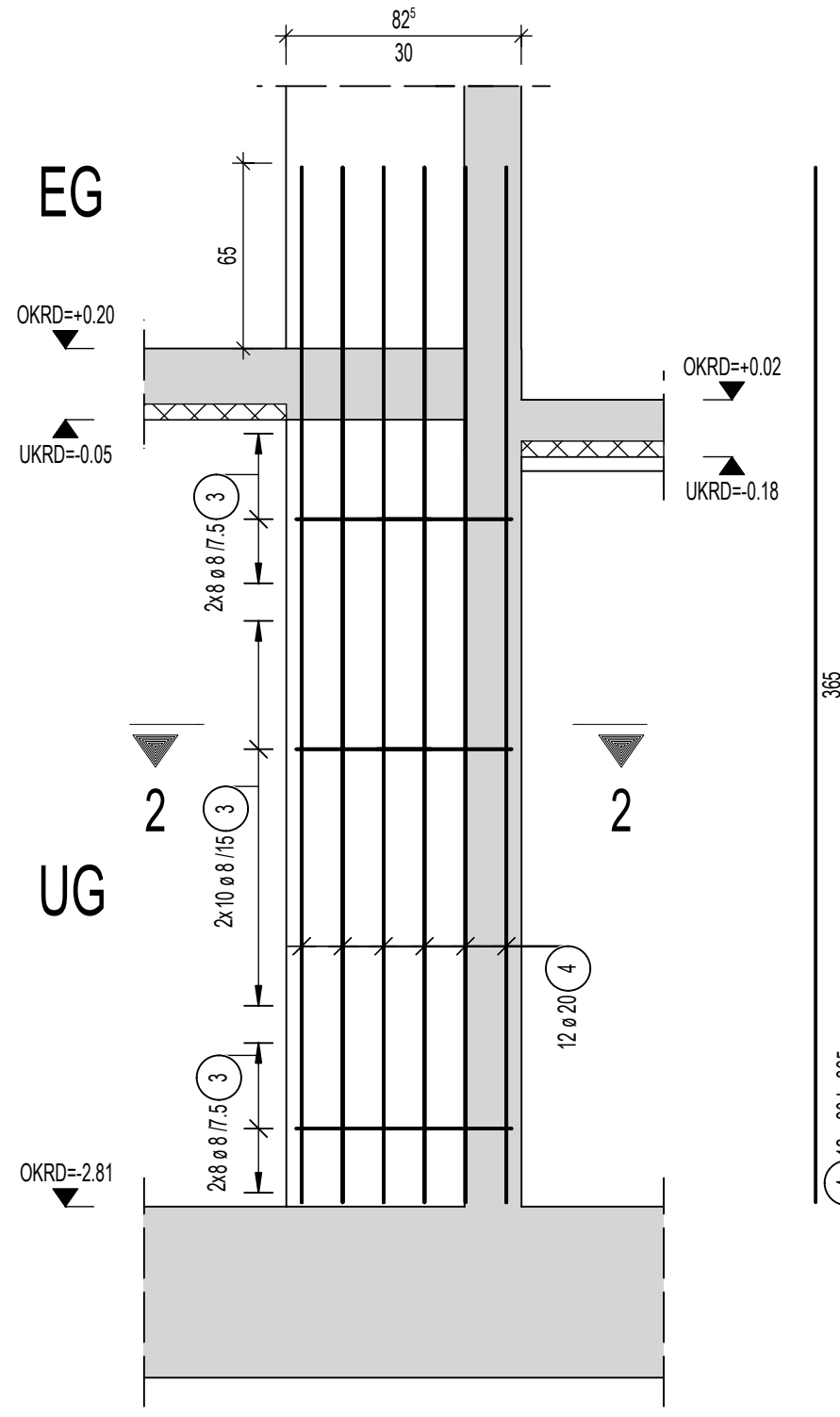


Schnitt 1 - 1  
M 1:25

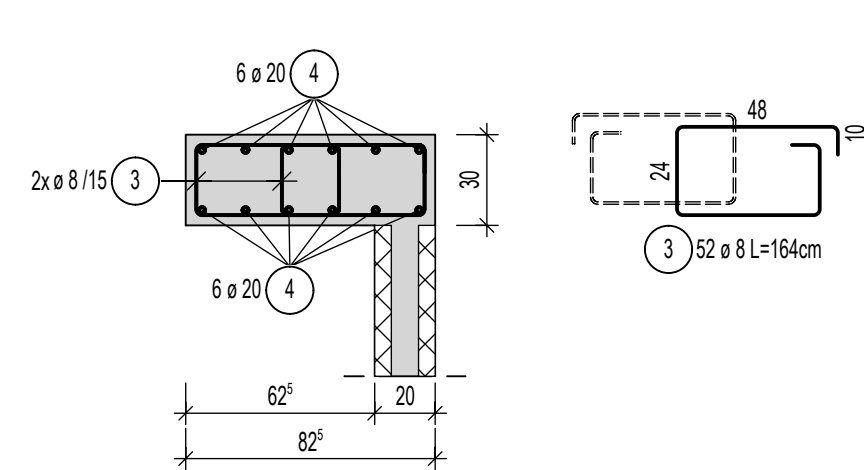


S-20

Stb. Stütze, b/d=30/82cm  
C35/45, Betondeckung: Cv=3,0cm  
M 1:25

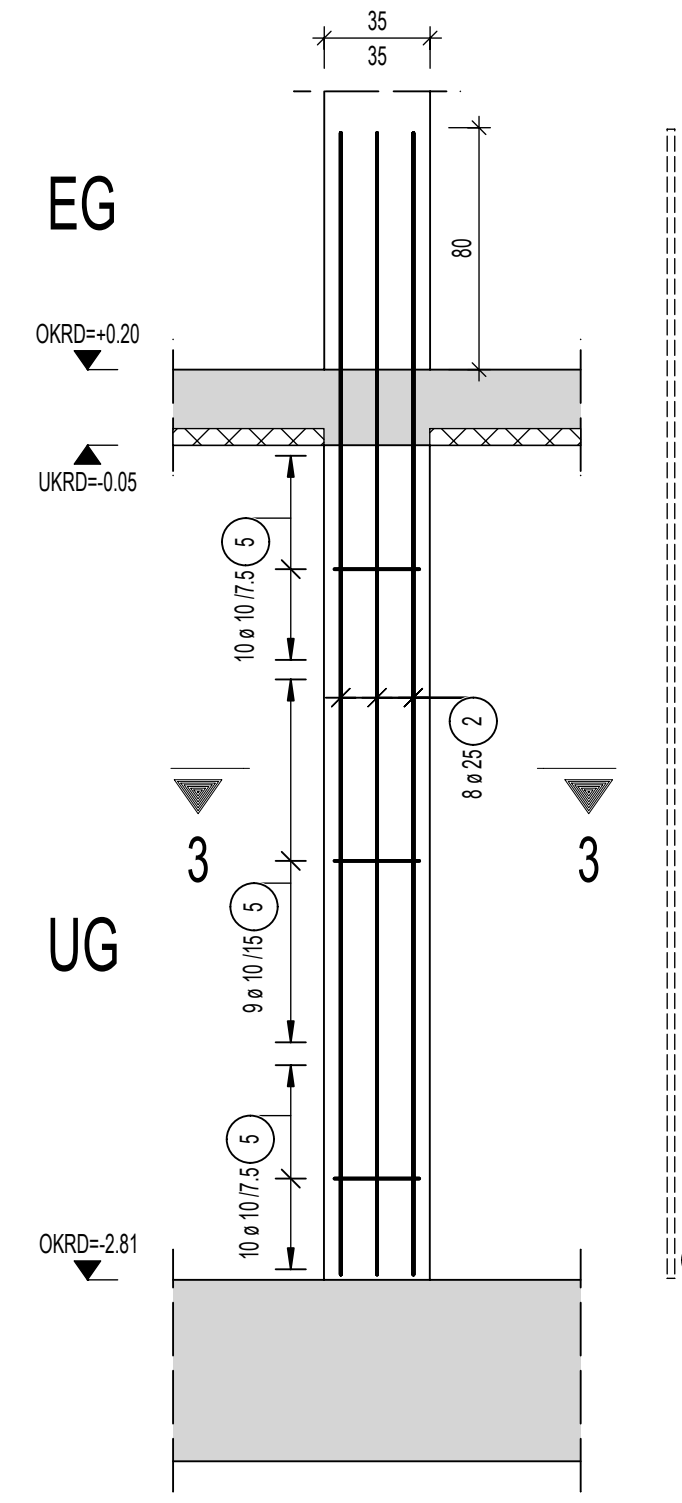


Schnitt 2 - 2  
M 1:25

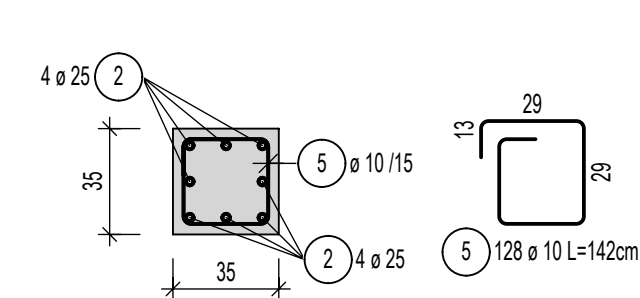


S-23 und S-26

Stb. Stütze, b/d=35/35cm  
C35/45, Betondeckung: Cv=3,0cm  
M 1:25, 2xAusführen

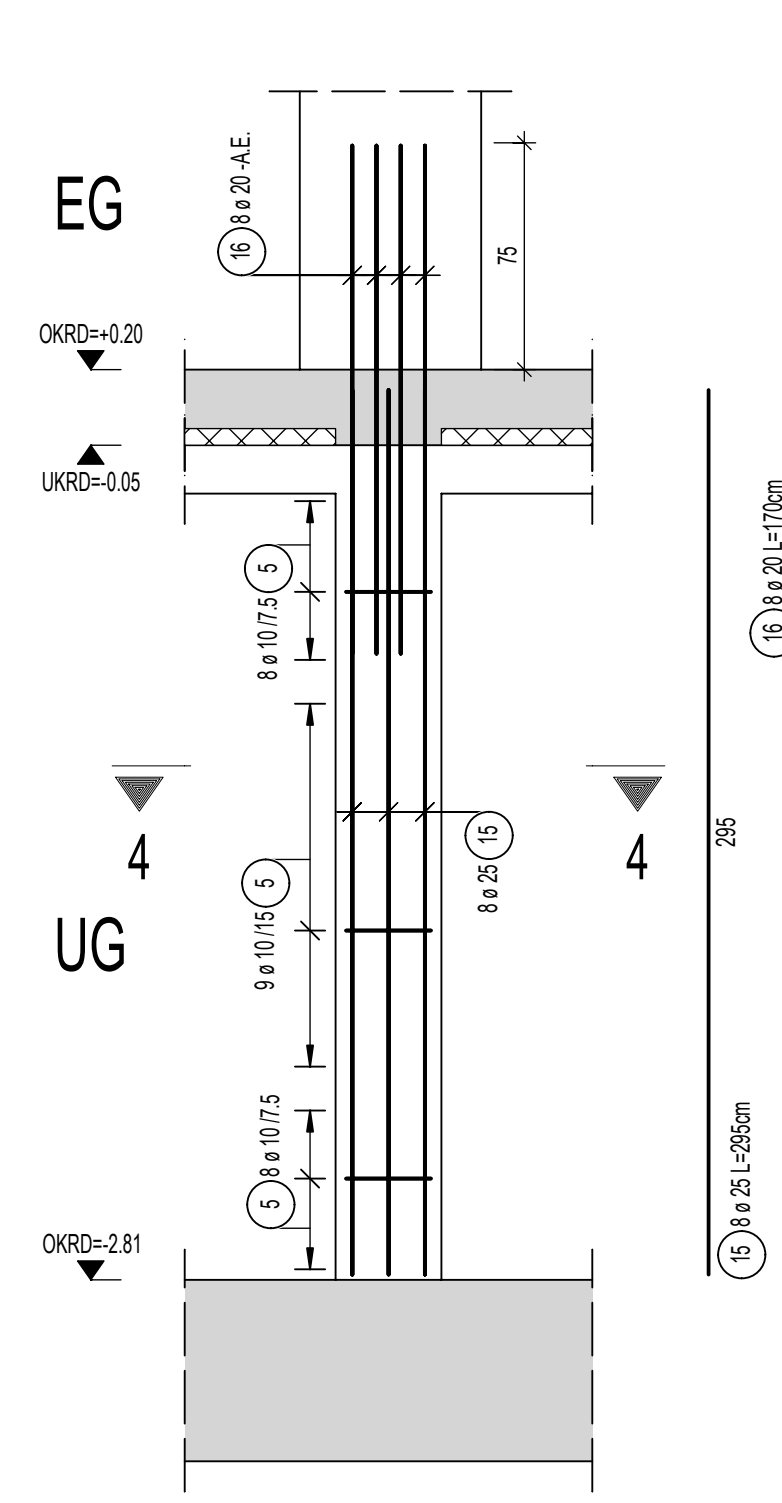


Schnitt 3 - 3  
M 1:25

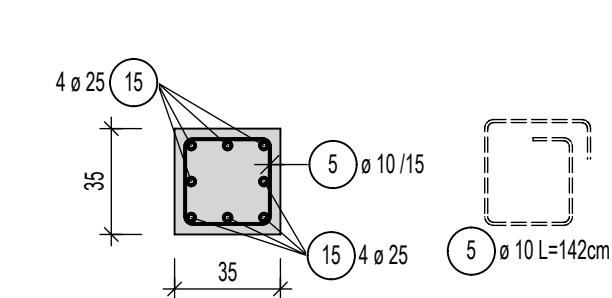


S-36

Stb. Stütze, b/d=35/35cm  
C35/45, Betondeckung: Cv=3,0cm  
M 1:25

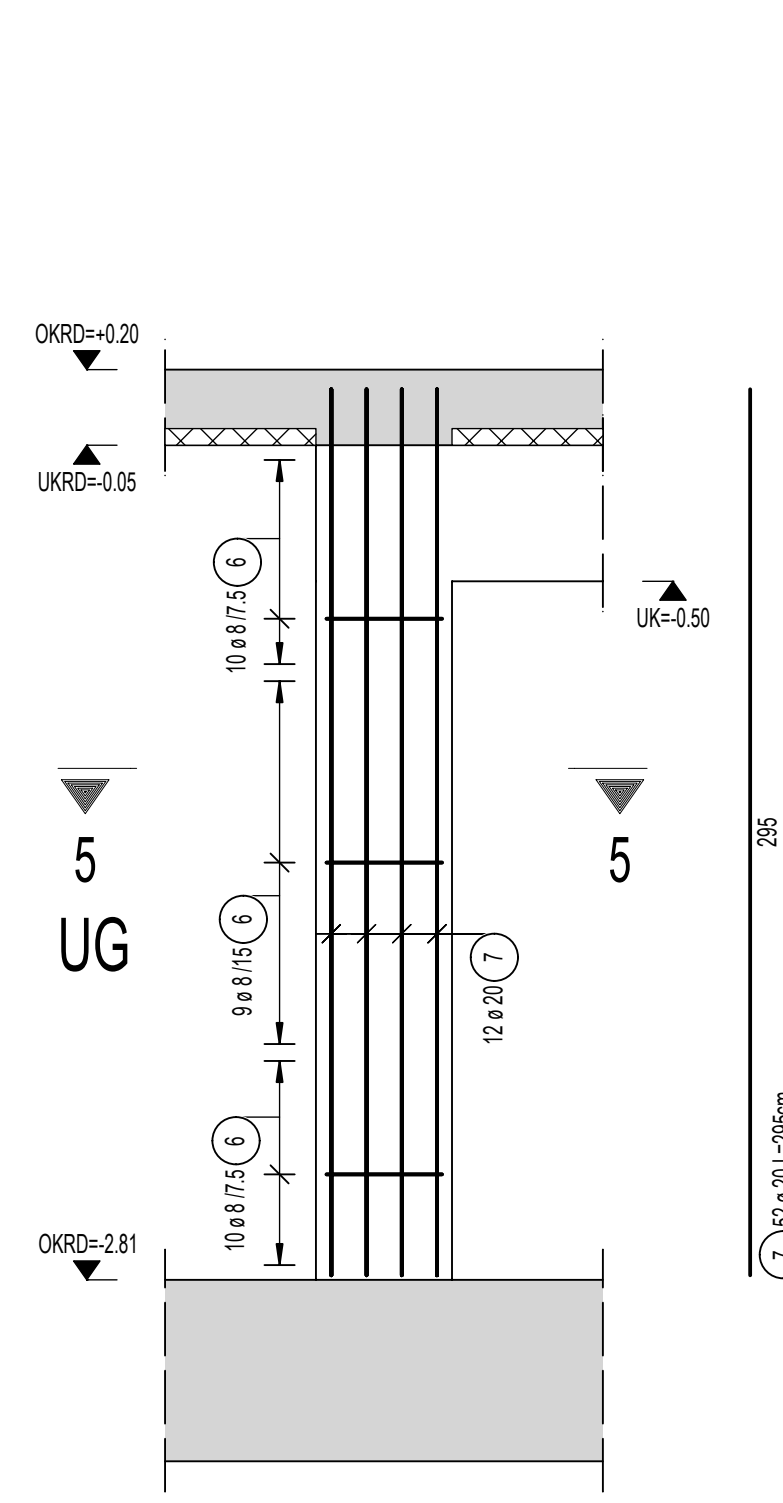


Schnitt 4 - 4  
M 1:25

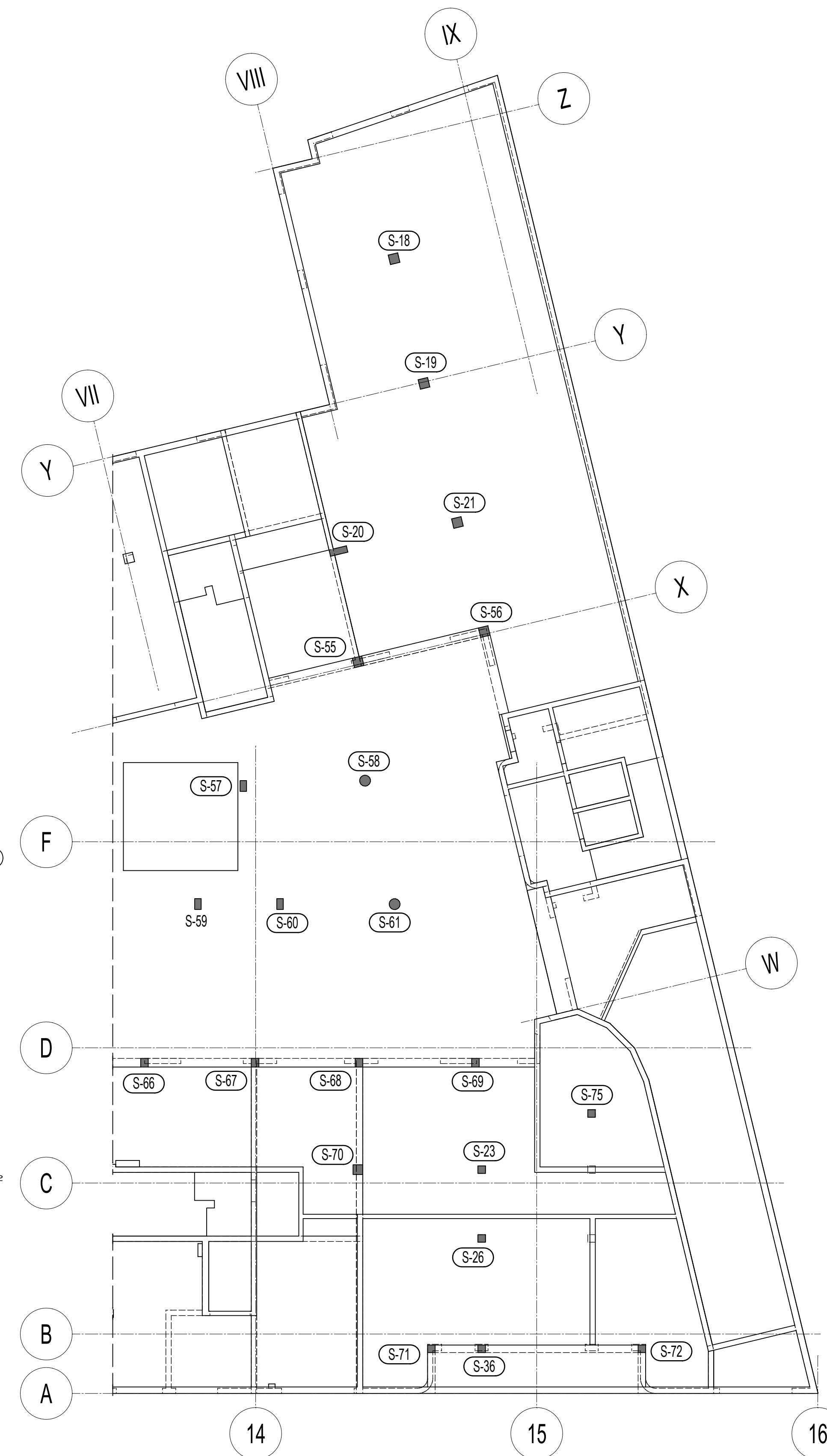
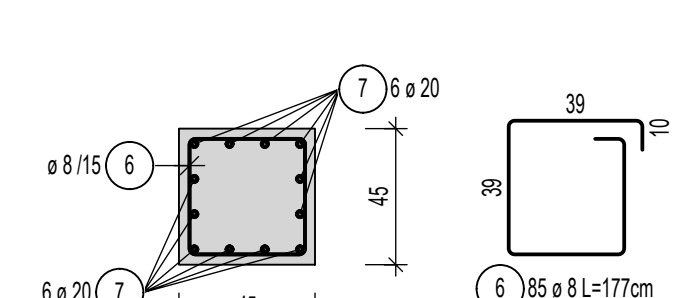


S-55 und S-56

Stb. Stütze, b/d=45/45cm  
C35/45, Betondeckung: Cv=3,0cm  
M 1:25, 2xAusführen

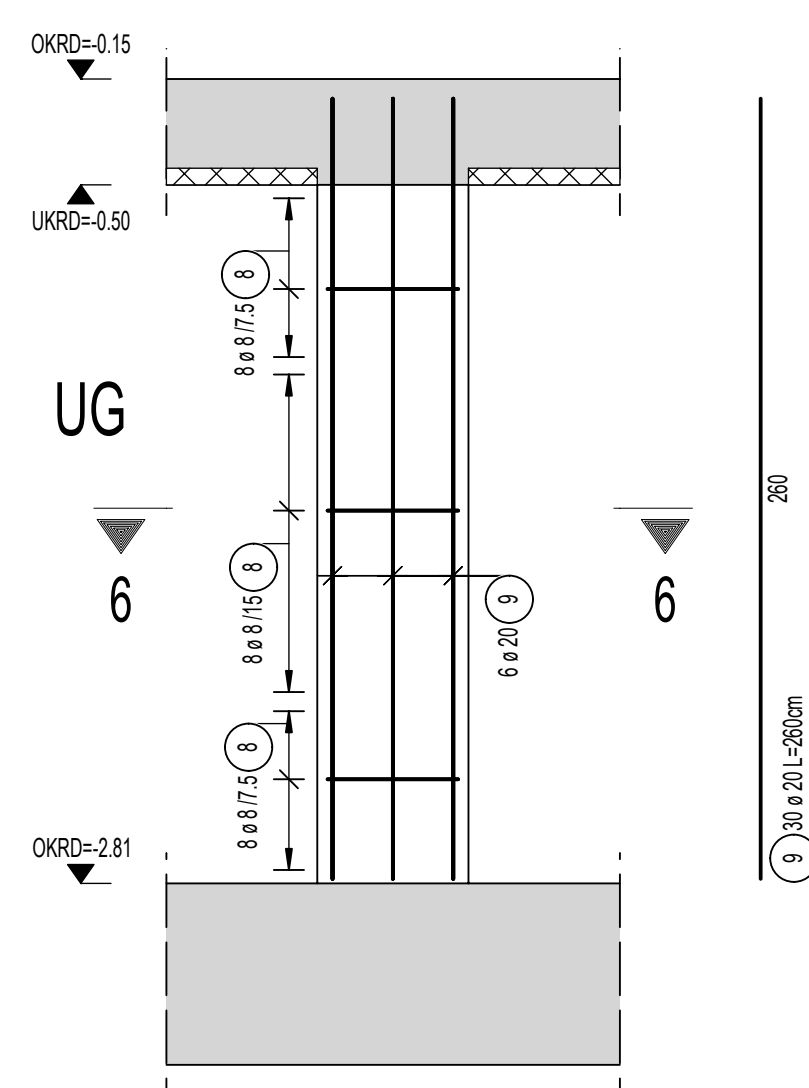


Schnitt 5 - 5  
M 1:25

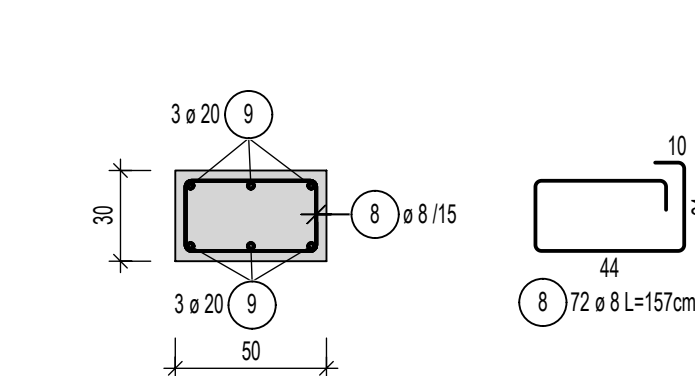


S-57 und S-59 bis S-60

Stb. Stütze, b/d=30/50cm  
C35/45, Betondeckung: Cv=3,0cm  
M 1:25, 3xAusführen

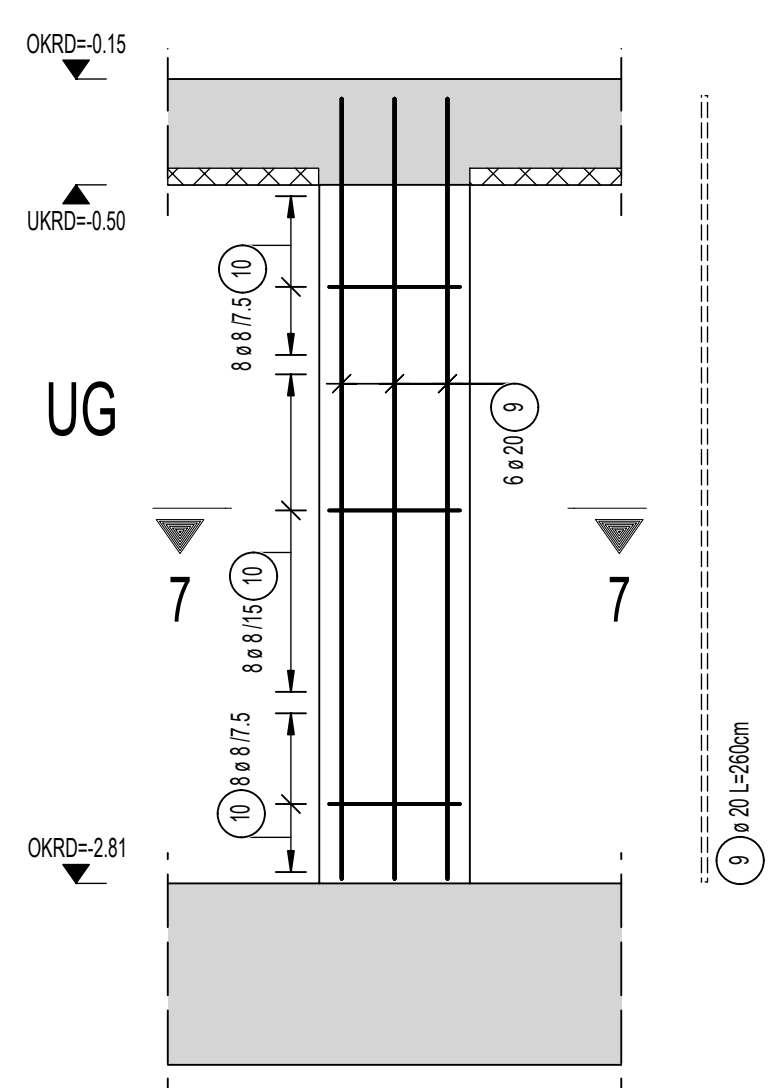


Schnitt 6 - 6  
M 1:25

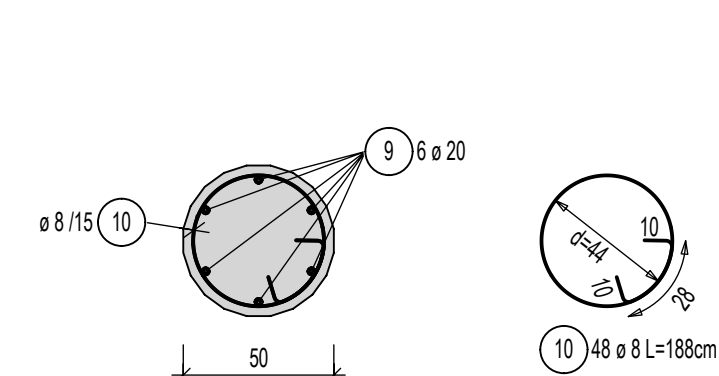


S-58 und S-61

Stb. Stütze, d=50cm  
C35/45, Betondeckung: Cv=3,0cm  
M 1:25, 2xAusführen

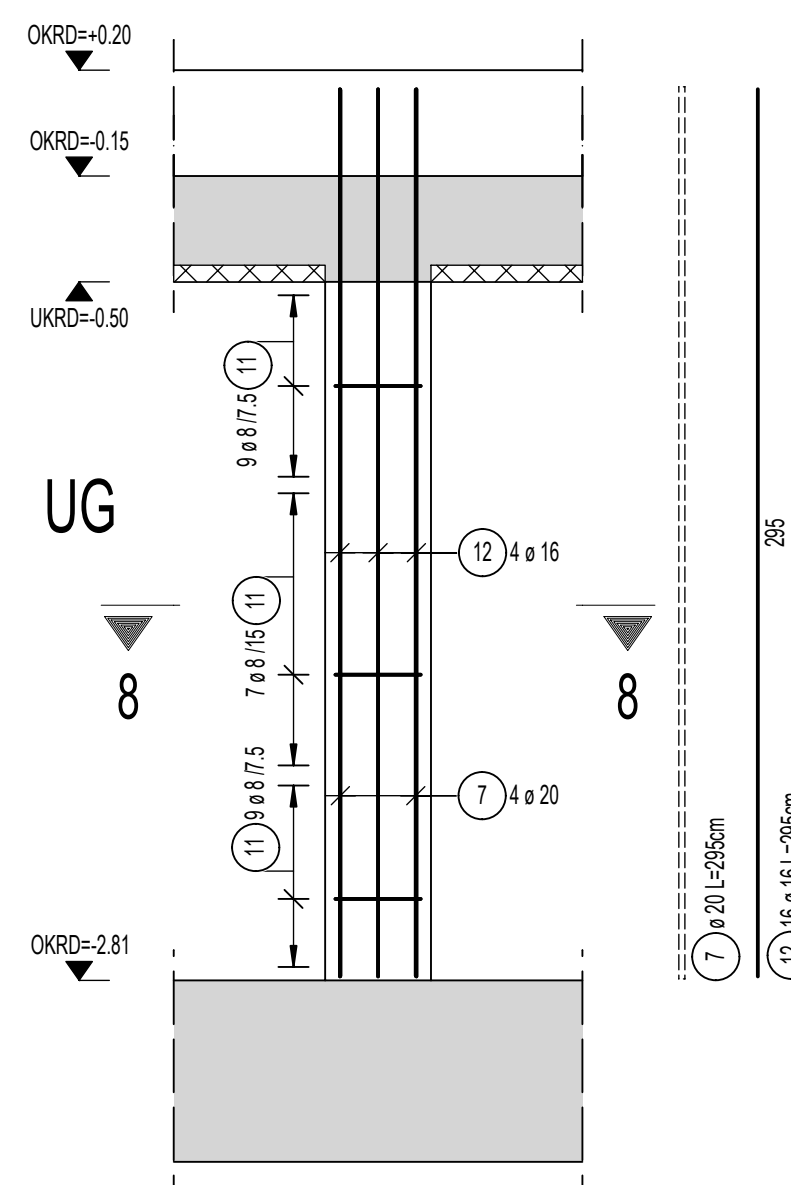


Schnitt 7 - 7  
M 1:25

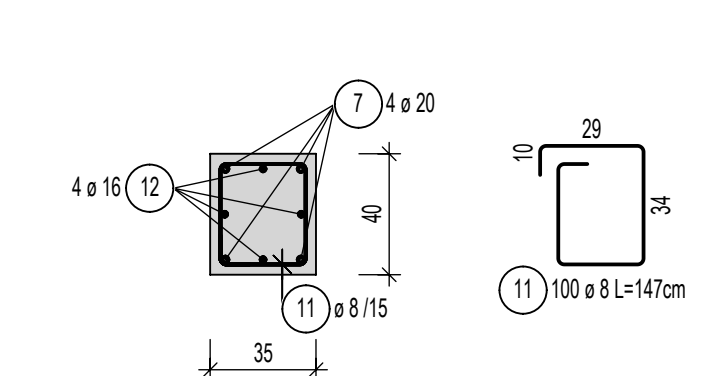


S-66 bis S-69

Stb. Stütze, b/d=40/35cm  
C35/45, Betondeckung: Cv=3,0cm  
M 1:25, 4xAusführen

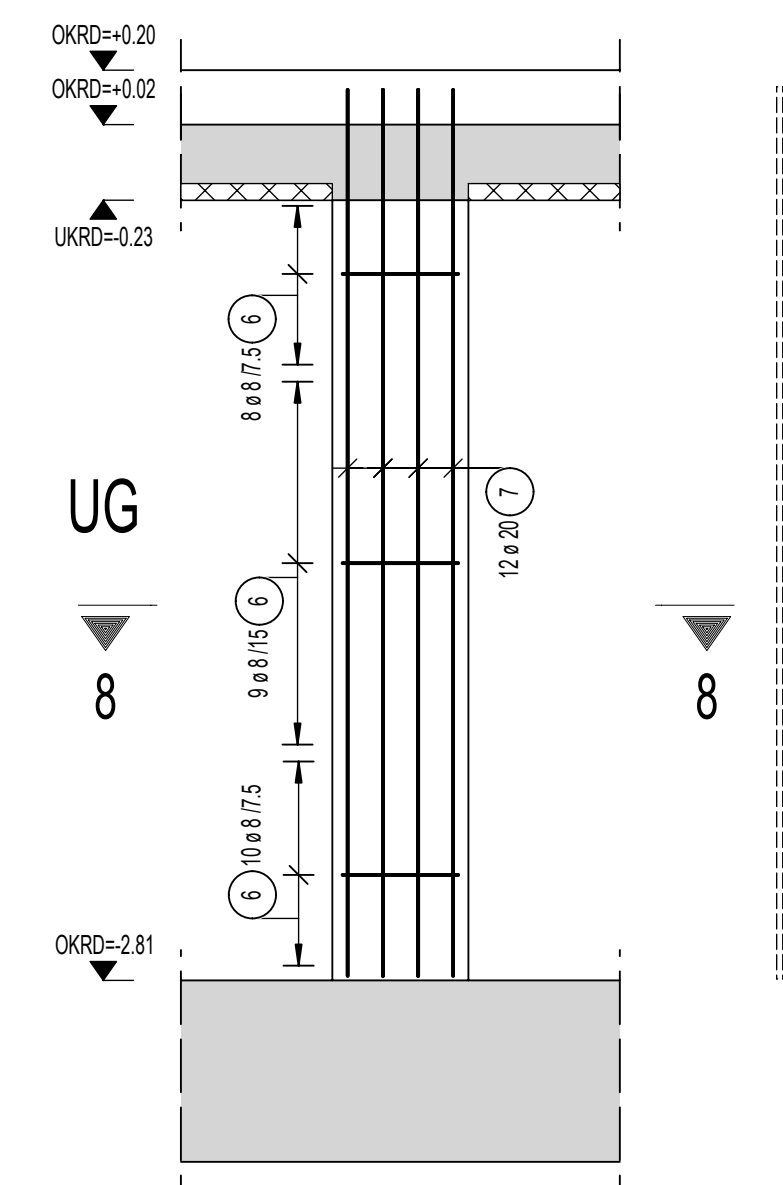


Schnitt 8 - 8  
M 1:25

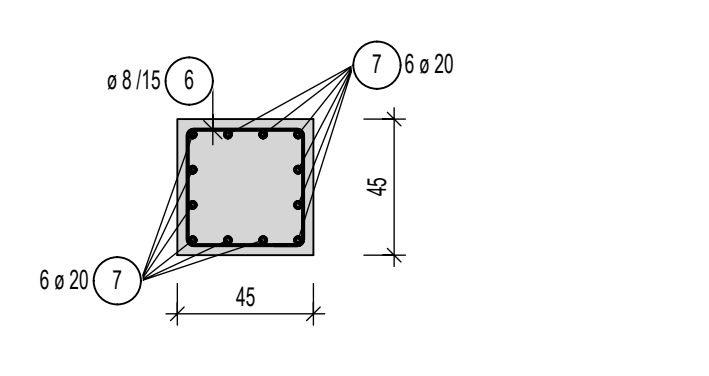


S-70

Stb. Stütze, b/d=45/45cm  
C35/45, Betondeckung: Cv=3,0cm  
M 1:25

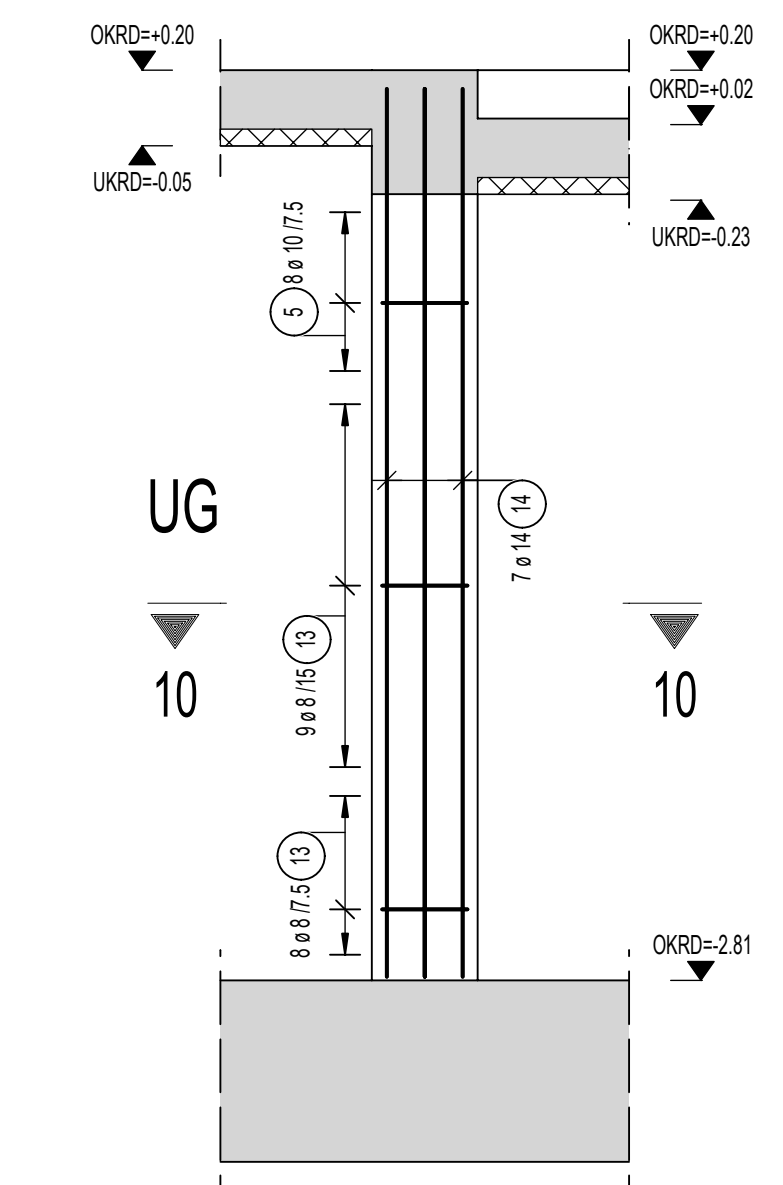


Schnitt 9 - 9  
M 1:25

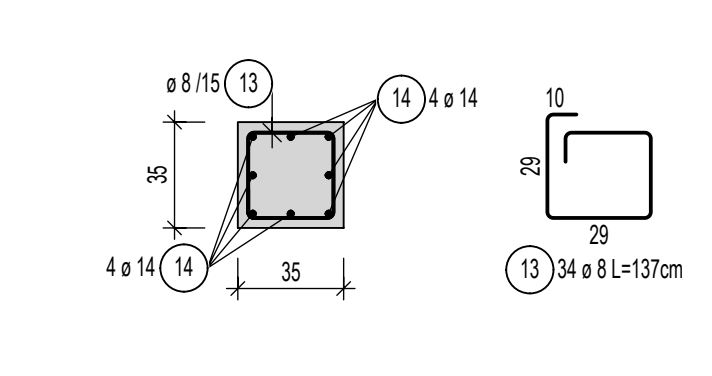


S-71 und S-72

Stb. Stütze, b/d=35/35cm  
C35/45, Betondeckung: Cv=3,0cm  
M 1:25, 2xAusführen

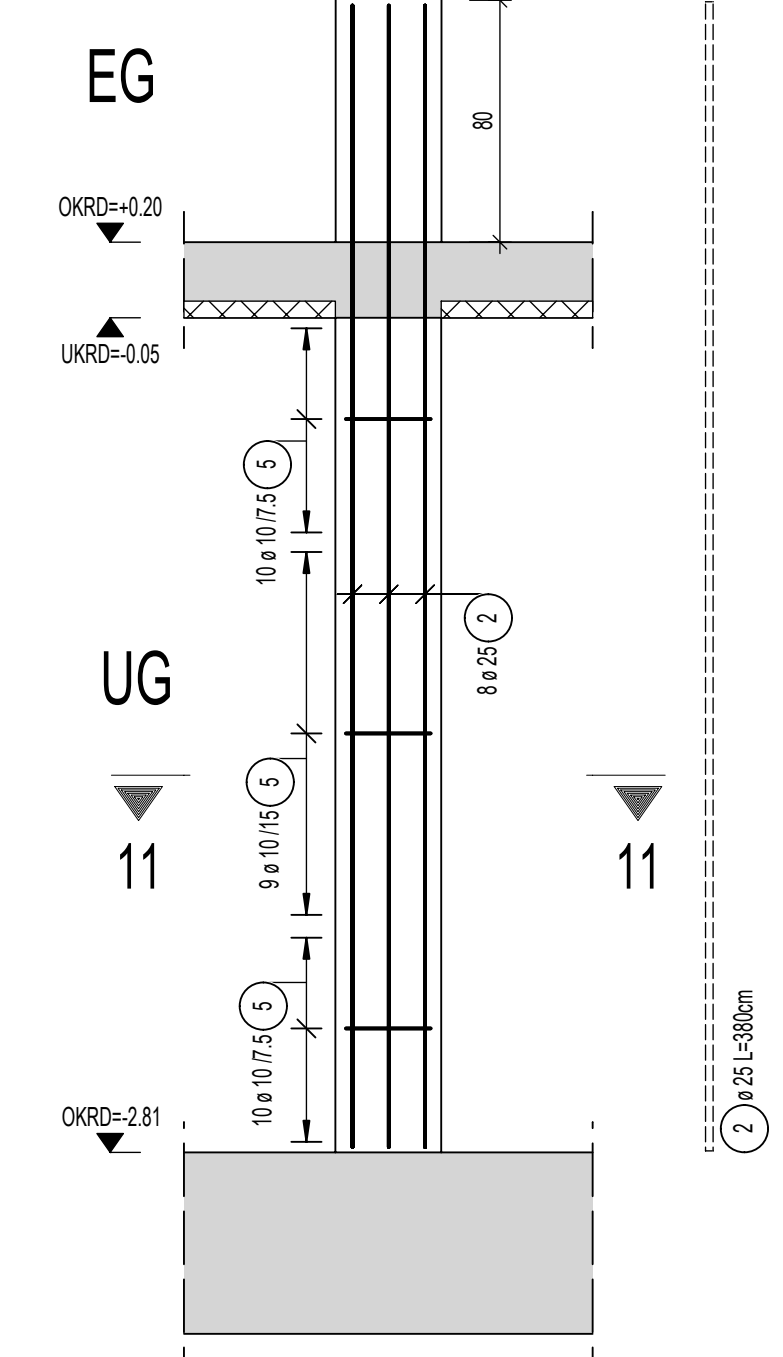


Schnitt 10 - 10  
M 1:25

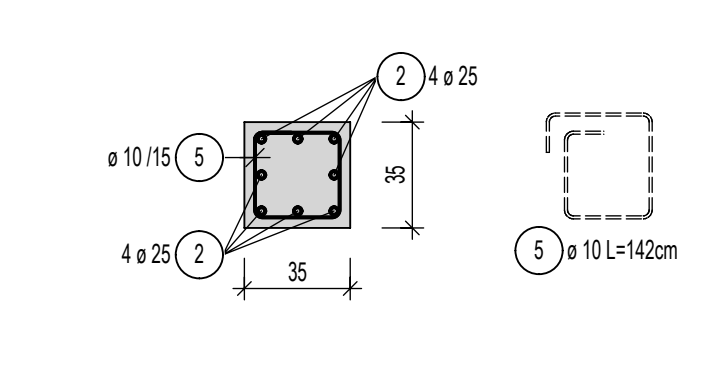


S-75

Stb. Stütze, b/d=35/35cm  
C35/45, Betondeckung: Cv=3,0cm  
M 1:25



Schnitt 11 - 11  
M 1:25



Stabliste - Biegeformen

Pos.	Stück	a [mm]	Einzel Länge [m]	Benannte Biegeform (unmaßstäblich)	Gesamt Länge [m]	Masse [kg]
1	87	10	1.82	[Diagram]	158.34	97.70
2	60	25	3.80	[Diagram]	228.00	877.80
3	52	8	1.64	[Diagram]	85.28	33.69
4	12	20	3.65	[Diagram]	43.80	108.19
5	128	10	1.42	[Diagram]	181.76	112.15
6	85	8	1.77	[Diagram]	150.45	59.43
7	52	20	2.95	[Diagram]	153.40	378.90
8	72	8	1.57	[Diagram]	113.04	44.65
9	30	20	2.60	[Diagram]	78.00	192.66
10	48	8	1.88	[Diagram]	90.24	35.64
11	100	8	1.47	[Diagram]	147.00	58.07
12	16	16	2.95	[Diagram]	47.20	74.58
13	34	8	1.37	[Diagram]	46.58	18.40
14	16	14	2.95	[Diagram]	47.20	57.11
15	8	25	2.95	[Diagram]	23.60	90.86
16	8	20	1.70	[Diagram]	13.60	33.59

Gesamtmasse [kg]:

2273.42